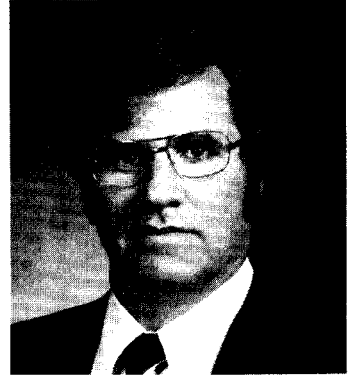
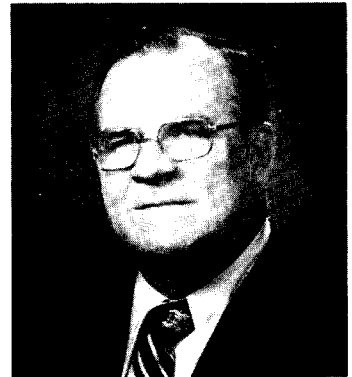


**LAURENCE LEVITAN**, Democrat, District 15. Born in Washington, D.C., October 22, 1933. Attended Washington, D.C., public schools; Washington and Lee University, B.S., 1955; George Washington Law School, J.D., 1958. Admitted to Maryland Bar, 1964. Past officer and director, Regency Estates Citizens Association and Regency Estates Swim Club; past president and trustee, Georgetown Hill Elementary School PTA. Officer and director, Montgomery County Heart Association. Member, Montgomery County Financial Advisory Committee, 1968-1970. Member and past chairman, Joint Committee on Management of Public Funds. Member, Governor's Commission to Study Unification of the Circuit Court; Governor's Commission to Study School Construction Programs; Tax Assessments Study Task Force Committee; Fiscal Affairs Committee, Southern Legislative Conference; Fiscal Affairs and Oversight Committee, National Conference of State Legislatures; Special Committee to Finance Agricultural Land Preservation; Joint Legislative Committee on Port of Baltimore. Married. Member of the House of Delegates, 1971-1974. Member of the Senate since 1975. Chairman, Budget and Taxation Committee since 1979. Member, Legislative Policy Committee; Financial Institutions Committee; Budget and Audit Committee; Governor's Commission to Study Condominium Laws; Governor's Commission on Compensation and Personnel Policies; Subcommittee on Revenue Structure of the Task Force to Study State-Local Fiscal Relationships. District office: 11426 Georgetown Dr., Potomac 20854; tel. 656-0915. Annapolis office: 100 James Bldg., 21401; tel. 841-3169.



**JOSEPH J. LONG, SR.**, Democrat, District 36. Born in Delmar, July 19, 1921. Attended public schools in Salisbury and Delmar; Paynter Business School. Electrician. Served with the U.S. Air Force, 1942-1946. Member, Salisbury City Council, 1958-1962. Member, Governor's Commission to Study Public Employee Labor Relations; Governor's Commission to Study the Revision of the Child Labor Laws; Governor's Advisory Committee on Elevators. Vice-chairman, Joint Committee to Study the State Economy. President, Young Democratic Club of Wicomico County, 1960-1961. Member, Democratic Club of Wicomico County; Assateague Democratic Club; Salisbury Democratic Committee. Member, International Association of Electrical Inspectors; Farm Bureau; Moose; American Legion. Member, Bi-state Chesapeake Bay Commission. Married. Member of the House of Delegates, 1963-1978. Chairman, Wicomico County Delegation, 1967-1978. Chairman, Subcommittee on Labor and Management of Economic Matters Committee, 1968-1978. Chairman, Joint Governor's Commission on Study of Mobile Homes since 1976. Member of the Senate since 1979. Member, Constitutional and Public Law Committee since 1979. District office: 730 S. Park Drive, Salisbury 21801; tel. 742-9032. Annapolis office: 206 James Bldg. 21401; tel. 841-3645.



**FREDERICK C. MALKUS, JR.**, Democrat, District 35. Born in Baltimore, July 1, 1913. Attended Dorchester County public schools; Western Maryland College, A.B., 1934; University of Maryland School of Law, LL.B., 1938. Served with U.S. Army during World War II. Trustee, Western Maryland College. Married. Member of House of Delegates, 1947-1951. Member of the Senate since 1951. Chairman of the Committee on Judicial Proceedings, 1955-1966. Member of Legislative Council (now Legislative Policy Committee) since 1955. President Pro Tem since 1975. District office: 500 Spring St., P.O. Box 316, Cambridge 21613; tel. 228-7230. Annapolis office: Pres. Wing, James Bldg., 21401; tel. 841-3590.



**EDWARD J. MASON**, Republican, District 1. Born in Cumberland, June 12, 1930. Attended Cumberland parochial schools; University of Maryland; Strayer's Business College, certificate, 1951. Restaurant proprietor. Served in the U.S. Air Force, 1949-1955. Chairman, Republican State Central Committee of Allegany County, 1969-1970. Member, board of directors, Allegany County Economic Development Corporation. Vice-president, Maryland Federation of Young Republicans. President, Allegany County Young Republicans. Member, National Restaurant Association. Member, board of directors, Western Maryland Chamber of Commerce; Route 40 Association. Outstanding Young Republican in Maryland, 1968. Outstanding Young Republican in Allegany County, 1967-1968. Married. Member of the Senate since 1971. Minority Leader since 1974. Member, Legislative Policy Committee. District office: Rt. 2, Box 102-A, Cumberland 21502; tel. 777-2168. Annapolis office: 407 James Bldg., 21401; tel. 841-3560.

