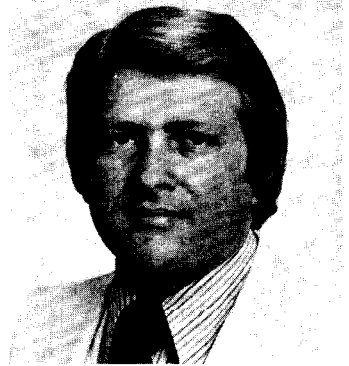
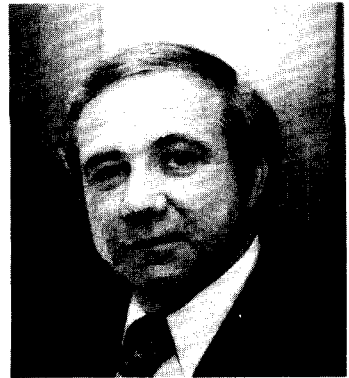


DENNIS F. RASMUSSEN, Democrat, District 7. Born in Essex, June 14, 1947. Attended Baltimore County public schools; Essex Community College; Loyola College, B.A., 1970. Real estate associate; former independent businessman and bank operations officer. Member, Southeastern Y.M.C.A. Board of Directors; Vocational-Technical Education Advisory Council of Baltimore County; Exchange Club of Essex; Eastern Baltimore County Democratic and Civic Association; 15th District Democratic Club; Baltimore County Marine, Fire, Rescue, Paramedic Association; Greater Kingsville Improvement and Civic Association; Essex Improvement Association; Blue Ridge/Walnut Hills Improvement Association; Deep Creek Democratic and Civic Club; Essex Heritage Society. Board of Directors, Arthritis Foundation, Maryland Chapter. Board of Trustees, Franklin Square Hospital. Married. Member of the House of Delegates, 1975-1978. Member, Senate Finance Committee; Joint Committee on Personnel Management Study, 1975-1978; Joint Committee on Drug Abuse and Alcoholism Administration Merger, 1975; Joint Budget and Audit Committee, 1979-; Joint Committee on Legislative Ethics, 1979-; Special Joint Committee on Energy, 1979-; Maryland Legislative Information System Advisory Committee, 1980-. Chairman, Ad Hoc Committee on State Data Processing, 1975-1978. Vice-chairman, Governor's Commission on Mobile Homes, 1979-; Mental Health Facilities and Treatment Programs Commission, 1980-. Member of the Senate since 1978. District office: 418 Eastern Blvd., Baltimore 21221; tel. 391-7800. Annapolis office: 210 James Bldg., 21401; tel. 841-3642.



H. ERLE SCHAFER, Democrat, District 32. Born in Baltimore, February 2, 1938. Attended Baltimore City public schools; University of Baltimore; University of Baltimore Law School; LL.B., J.D., 1963; Mount Vernon School of Law. Served in the U.S. Marine Corps and U.S. Marine Corps Reserves. Anne Arundel County Council, 1970-1974; Anne Arundel County Urban Renewal Administrator, 1975-1978; former co-chairman, Governor's Commission on Hiring the Handicapped. Member, North County Businessman's Association; Chamber of Commerce; past president, Richard Henry Lee P.T.A.; Optimist Club; AF & AM; Elks; past chairman, Cancer Fund Drive, 1977. Member, board of directors, American Lung Association; Anne Arundel General Hospital. Voted Outstanding Young Man of the Year, 1970-1971. Instrumental in establishing the Open Door Drug Rehabilitation Program in Glen Burnie; assisted in effort that resulted in Anne Arundel County Community College Glen Burnie Center. Married. Member of the Senate since 1979. District office: 7887 Chestnut Rd., Severn 21144. Annapolis office: 205 James Bldg., 21401; tel. 841-3653.



MARGARET C. SCHWEINHAUT, Democrat, District 18. Born in Washington, D.C. Attended Washington, D.C., public schools; The George Washington University; National University Law School. Honorary Doctor of Laws degree, St. Joseph College, 1971. Chairperson, State Commission on Aging. Member, International Gerontological Society; Montgomery Retarded Children's Association. Certificate of Merit, National Council of Senior Citizens; Outstanding Legislator, Knights of Columbus; Citation of Merit, Veterans of Foreign Wars; Outstanding Service, Bethesda-Chevy Chase Chamber of Commerce. Widow. Member of the House of Delegates, 1955-1961. Member of the Senate since 1961. Chairperson, Executive Nominations Committee since 1971. Member, Legislative Council (now Legislative Policy Committee) since 1971. District office: 3601 Saul Rd., Kensington 20795; tel. 946-3111. Annapolis office: 304 James Bldg., 21401; tel. 841-3137.



S. FRANK SHORE, Democrat, District 17. Born in Washington, D.C., December 3, 1935. Attended Washington, D.C., parochial and public schools; Southeastern University; Pennsylvania State University; American University Labor Studies Institute. Married. St. Jude's Church and choir member. Over twenty years employment with The Chesapeake & Potomac Telephone Company and member of Communications Workers of America. Served in Fourth Armored Division, U.S. Army. Member, Men's Guild and Health Planning Committee, Holy Cross Hospital, Silver Spring; board of directors, St. Luke's House, Inc. Member, Elks; American Legion; Adult Scout of Boy Scouts of America; Knights of Columbus; honorary life membership in Eagles. Former member, Southern Legislative Conference (vice-chairman of Human Resources and Urban Affairs Committee). Member, House of Delegates, 1971-1978. Member of the Senate since 1978. Annapolis office: 305 James Bldg., 21401; tel. 841-3134.

