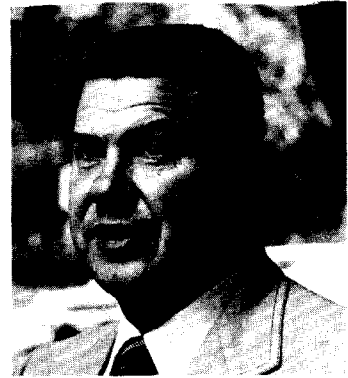


SHEILA ELLIS HIXSON, Democrat, District 20. Born in L'Anse, Michigan, February 9, 1933. Attended L'Anse public schools. Graduated from Northern State Teachers College. Administrative assistant, Democratic National Committee. Member, Montgomery County Democratic State Central Committee; National Capital Democratic Club; Women's Suburban Democratic Club; Eastern Montgomery, Kensington Wheaton Democratic Club; Plowmen and Fishermen, Montgomery County. Member of the House of Delegates since 1976. District office: 1008 Broadmore Circle, Silver Spring 20904; tel. 384-4739. Annapolis office: 221 Lowe Bldg., 21401; tel. 841-3019.



IRWIN F. HOFFMAN, Democrat, District 2B. Born in Cumberland, Allegany County, January 10, 1927. Attended Hagerstown public schools. Served with U.S. Navy during WWII. General insurance agent. Past Exalted Ruler, Lodge #378, B.P.O.E. Married, four daughters. Member of the House of Delegates since 1963. Vice-chairman, Environmental Masters Committee, 1969—; Natural Resources Committee, 1968. Chairman, Washington County Delegation, 1975—; Western Maryland Delegation, 1980—. District office: 289 Frederick St., Hagerstown 21740; tel. 739-7397. Annapolis office: 423 Lowe Bldg., 21401; tel. 841-3449.



PAULA COLODNY HOLLINGER, Democrat, District 12. Born in Washington, D.C., December 30, 1940. Attended Calvin Coolidge High School, Washington, D.C.; Mt. Sinai Hospital School of Nursing, New York, RN, 1961. Registered Nurse. Delegate, Democratic National Convention, 1976; Baltimore County Commission for Women (secretary, 1977-1978), 1977—. Member, American Nurses Association; Maryland Nurses Association; Baltimore County Nurses Association. Member, Ambulatory Surgery Task Force; Health Boards Funding Subcommittee; Joint Committee on Deinstitutionalization. Former co-chairperson, Pikesville League of Women Voters; member, National Order of Women Legislators; former recording secretary, Hernwood Improvement Association. Member, Beth Am Synagogue; B'nai B'rith Women; National Council of Jewish Women. Member, Organization for Rehabilitation and Training. Appointed to Statewide Health Coordinating Council; Chancellor's Commission on the Status of Women at UMBC, 1979. Listed in *Notable Americans*, 1979. Listed in *Who's Who of American Women*. Married; 3 children. Member of the House of Delegates since 1979. Member, Environmental Matters Committee; Joint Subcommittee on Public Service Commission Legislation. District office: 3708 Lanamer Rd., Randallstown 21133; tel. 922-3926 or 655-2525. Annapolis office: 305 Lowe Bldg., 21401; tel. 841-3334.



WILLIAM S. HORNE, Democrat, District 35. Born in Easton, June 23, 1936. Attended Easton public schools; The Bolles School, Jacksonville, Florida; University of Maryland; Virginia Polytechnic Institute, B.S., 1964; Tulane University School of Law, LL.B., 1965. Admitted to the Maryland Bar, 1966. Served in the U.S. Army, 1956-1958. Assistant State's Attorney, Talbot County, 1968-1971; State's Attorney, Talbot County, 1971-1973. Member, American, Maryland State, and Talbot County Bar Associations; Alpha Kappa Psi; Phi Kappa Phi; Easton Memorial Hospital Association; Talbot County Mental Health Advisory Committee. Former secretary, Chesapeake Rehabilitation Center. Married. Member of the House of Delegates since 1973. District office: P. O. Box 204, Stewart Bldg., Easton 21601; tel. 822-0470. Annapolis office: 416 Lowe Bldg., 21401; tel. 841-3425.

