

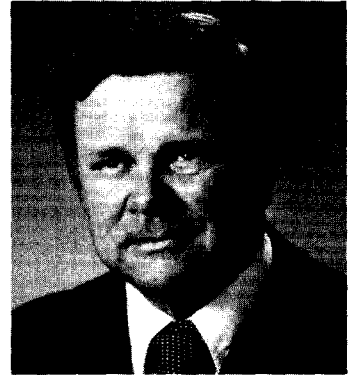
**ELLEN R. SAUERBREY**, Republican, District 5B. Born in Baltimore, September 9, 1937. Attended Towson Senior High School; Western Maryland College, B.A., 1959. District manager, U.S. Census, 1970; delegate, Republican National Convention, 1968, 1976; vice-chairman, Republican Central Committee of Baltimore County, 1966-1970. Founder, Maryland Taxpayers Coalition. Former State Secretary and member of Board of Directors, Maryland Society for Multiple Sclerosis. Legislative aide, Maryland General Assembly, 1973-1978; former substitute member, Baltimore County Board of Election Supervisors; former vice-president, Maryland Federation of Republican Women; former president, Baltimore County Federation of Republican Women; U.S. Service Academies Review Board. Member, Farm Bureau; American Legislative Exchange Council. Authored newspaper column, *Congressional Rollcall*. Member, Beta Beta Beta National Biological Honorary Society. Married. Member of the House of Delegates since 1979. Member, Economic Matters Committee; Joint Committee on Tax and Spending Limitations. District office: 4122 Sweet Air Rd., Baldwin 21013; tel. 592-2200. Annapolis office: 310 Lowe Bldg., 21401; tel. 841-3342.



**PATRICK C. SCANNELLO**, Democrat, District 32. Born in Baltimore, August 24, 1936. Attended Edison Vocational/Mergenthaler. Liquor store owner/operator. Served in the Maryland National Guard and Army Reserve. Member, Arthur Slade Home School Association; North Glen Improvement Association; Ferndale Community Club; Moose; Holy Trinity Council; Knights of Columbus; Leukemia Society of Baltimore. Board member, Anne Arundel County Economic Opportunity Committee. Married; 4 children. Member of the House of Delegates since 1979. District office telephone: 768-5678. Annapolis office: 214 Lowe Bldg., 21401; tel. 841-3233.



**GEORGE T. SCHMINCKE**, Democrat, District 32. Born in Baltimore, December 25, 1923. Attended Mt. St. Joseph High School. Served in the U.S. Navy during WWII; received European Ribbon, American Ribbon, Pacific Ribbon with two stars. Anne Arundel County Democratic Committee, 1974-1978 (chairman, 3 years). Member, Ferndale Community Club; Knights of Columbus; Elks; Tri-District Democratic Club; Citizens Democratic Club (former president); North Ferndale Community Association, Inc. (former president); Greater Ferndale Community Civic Association. Married; 2 children. Member of the House of Delegates since 1979. Annapolis office: 214 Lowe Bldg., 21401; tel. 841-3233.



**DAVID L. SCULL**, Democrat, District 18. Born in Washington, D.C., May 10, 1943. Attended Montgomery County public schools; St. Albans School; Princeton University, A.B., high honors, 1965; University of Virginia Law School, J.D., 1968. Captain, U.S. Army, Germany and Vietnam, 1968-1971. Member, Governor's Task Force on Campaign Financing, 1974-1976; Dewberry Commission on Reorganization of the Executive Branch, 1976-1978; Scanlan Commission on State-Local Fiscal Relations, 1979-1980. Chairman, House Appropriations Subcommittees on Zero-Base Budgeting and Sunset Laws; Montgomery County Task Force on Land Records. Married. Member of the House of Delegates since 1975. Chairman of the Montgomery County Delegation since 1978. District office: 8401 Connecticut Ave., Suite 1202, Chevy Chase 20015; tel. 654-7800. Annapolis office: 222 Lowe Bldg., 21401; tel. 841-3001.

