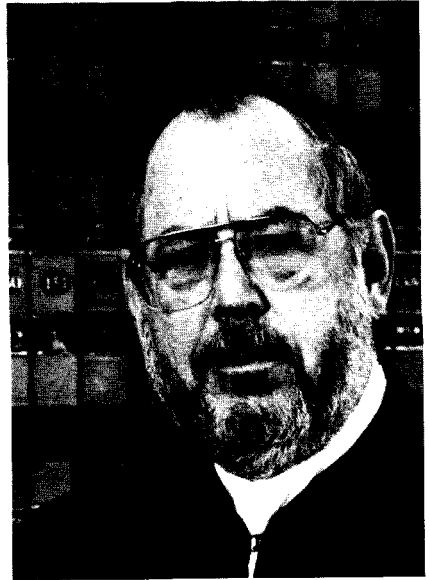


COURT OF SPECIAL APPEALS

BIOGRAPHIES OF MEMBERS

RICHARD P. GILBERT. Court of Special Appeals, 1972–; Chief Judge. Born in Baltimore, February 5, 1924. Mt. St. Joseph's High School; University of Baltimore, A.A., 1947; University of Baltimore, J.D., 1950, LL.M., 1954, LL.D. (Hon) 1979. Admitted to Maryland Bar, 1950. Served in U.S. Army. Member, American, Maryland State and Baltimore City Bar Associations; American Judicature Society. Chairman, National Conference of Chief Judges, Courts of Appeal, 1986–87. Member, Judicial Disabilities Commission, 1972–(chairman, 1974–); member, American Bar Association Advisory Commission on Judicial Standards; vice-chairman, Maryland Judicial Conference. Board of Zoning Appeals, Baltimore City, 1965–71; magistrate, Traffic Court, Baltimore City, 1955–59; member, Advisory Committee, Baltimore City Charter, 1963–65. Contributor to legal periodicals. Lecturer in law, University of Baltimore and American Academy of Judicial Education. Co-author, *Criminal Law, Practice and Procedure in Maryland; Maryland Tort Law Handbook*. Sigma Delta Kappa Intercollegiate Law Fraternity Distinguished Jurist Award, 1976; Alumnum of the Year, University of Baltimore Law School, 1982; chairman, University of Baltimore School of Law Advisory Board, 1982–. Married; 2 children.



PAUL E. ALPERT. Court of Special Appeals, 1982–. Born in Baltimore, September 1, 1935. Baltimore City College; University of Baltimore, A.A., 1954; University of Baltimore Law School, LL.B., J.D. (magna cum laude), 1957. Admitted to Maryland Bar, 1957. Served in U.S. Army and Maryland National Guard. Member, Maryland State Bar Association. Maryland House of Delegates, 1967–72; vice-chairman, House Judiciary Committee. Judge, District Court of Maryland, 1972–77. Judge, Third Judicial Circuit, 1977–82. Associate Professor (business law), Towson State University. Board member, Jewish Big Brother League; member, Center Lodge AF&AM; Golden Eagle Square and Compass Club. Married; 3 children.

ROBERT M. BELL. Court of Special Appeals, 1984–. Born in Rocky Mount, North Carolina, July 6, 1943. Dunbar High School; Morgan State University, A.B., 1966; Harvard Law School, J.D., 1969. Admitted to Maryland Bar, 1969. Member, Maryland State, Baltimore City, Monumental City and National Bar Associations. Judge, District Court, District 1, 1975–80. Judge, Eighth Judicial Circuit, 1980–84. Unmarried.

ROSALYN BLAKE BELL. Court of Special Appeals, 1983–. Born in Trenton, New Jersey, April 22, 1923. Trenton High School; Simmons College, B.S., 1944; National University, LL.B., J.D., 1951. Admitted to District of Columbia Bar, 1951, Maryland Bar, 1965. Member, American, Maryland State, Montgomery County, Women's and District of Columbia Bar Associations; Women's Bar Association of the District of Columbia;

National Conference of Appellate Judges; National Association of Women Judges; American Judges Association; Maryland Bar Foundation; American Bar Foundation; Advisory Committee, University of Baltimore School of Law, 1985–. Trustee, 1973–78, director, 1973–77, Montgomery-Prince George's Continuing Legal Education Institute. Vice-president, 1976–78, trustee, 1979–80, MICPEL. Chairperson, Montgomery County Abused Spouse Task Force, 1980–. Woman Lawyer of the Year, District of Columbia Women's Bar Association, 1975. Professional Achievement Award, George Washington University Law Association, 1980; Focus Women's Award, Women's Commission of Montgomery County, 1981; Alumni Achievement Award, Simmons College, 1982. Judge, District Court, Montgomery County, 1978–80. Judge, Sixth Judicial Circuit, 1980–83. Widowed; 1 child.

JOHN J. BISHOP, JR. Court of Special Appeals, 1981–. Born in Baltimore, December 6, 1927. Attended Baltimore parochial schools; Loyola College; Towson State University; University of Baltimore; University of Baltimore Law School, J.D., 1951. Admitted to Maryland Bar, 1954. Served in U.S. Coast Guard, honorably discharged. Member, Maryland State and Baltimore County Bar Associations. Former member, Maryland State Bar Association Board of Governors and Third Judicial Circuit Committee on Judicial Appointments. Member, Maryland Senate, 1967–81; minority whip; member, Judicial Proceedings Committee, Executive Nominations Committee; chairperson, Special Committee to Study the Mental Health Laws. Delegate, Eagleton Institute of Politics, Rutgers University, 1968. Instructor (political science), University of Baltimore,