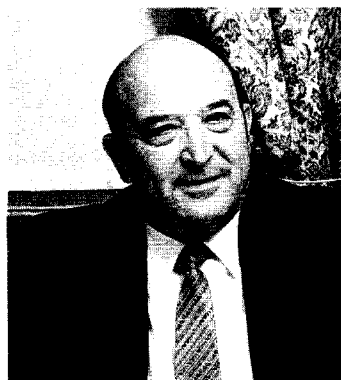


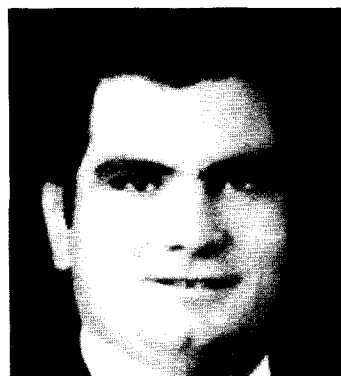
**TYRAS S. ATHEY**, Democrat, District 32. Born in Burtonsville, Montgomery County, March 30, 1927. Attended Montgomery County public schools. Served in U.S. Navy, 1945-47. Past member, State Trade Policy Council; Governor's Task Force on Volunteer Fire, Rescue and Ambulance Companies. Maryland representative to the Council of State Governments (past chairman, fiscal affairs and governmental operations committee). Vice-Chairman, Southern Legislative Conference. Past co-chairman, Task Force on Property Tax Reform. Past member, Governor's Task Force to Study Flexibility for Higher Education; Atlantic States Marine Fisheries Commission. Member, Elks; Moose. Married; three children. Member of the House of Delegates since 1967. Chairman, Ways and Means Committee, 1979—. House Chairman, Special Joint Committee on Income Tax Reform. Member, Rules and Executive Nominations Committee. Past chairman, Anne Arundel County Delegation. Member, Legislative Policy Committee; Joint Budget and Audit Committee; Spending Affordability Committee. Past chairman, Commission on Intergovernmental Cooperation. Annapolis office: 100 Lowe Bldg., 21401; tel. 841-3469.



**R. CHARLES AVARA**, Democrat, District 47. Born in Baltimore, January 11, 1932. Attended Baltimore public schools. Served in U.S. Navy, 1953-56. Chairman, Special Committee on School Pupil Transportation; Committee to Set Minimum Standards for Police Departments; Joint Capital Budget Committee, 1971-76. Member, Governor's Commission on Law Enforcement and the Administration of Justice; Special High Impact Courts Committee; Mayor's Coordinating Council on Criminal Justice. Married. Member of the House of Delegates since 1967. Former Vice-Chairman, Appropriations Committee. Chairman, Spending Affordability Committee. Member, Joint Committee on Administrative, Executive and Legislative Review. Annapolis office: 429 Lowe Bldg., 21401; tel. 841-3547.



**JOSEPH BARTENFELDER**, Democrat, District 8, Baltimore County. Born in Baltimore on January 3, 1957. Graduate of Calvert Hall High School; graduate of Towson State University, B.S. (business administration), 1978. Self-employed in family farming business in Perry Hall. Sponsor, Overlea Fullerton Recreation Council; elected area delegate, St. Joseph's Parish Council; member of 11 Democratic and civic clubs in the district; Calvert Hall Chips Scholarship Program; Calvert Hall Alumni Association; Towson State Alumni Association; Baltimore County Farmers' Produce Association; Maryland Farm Bureau, Young Farmer's Group of Maryland Farm Bureau. Married; two children. Member of the House of Delegates since 1983. Member, Appropriations Committee (subcommittee on education and human resources). Former Chairman, Baltimore County Delegation. District office: 8410 Belair Rd., Baltimore 21236; tel. 529-2144. Annapolis office: 307 Lowe Bldg., 21401-1991; tel. 841-3365.



**J. ERNEST BELL II**, Democrat, District 29B. Born in Leonardtown, April 26, 1941. Ryken High School; Mount St. Mary's College, B.S., 1963; Catholic University School of Law, J.D., 1966. Member of Maryland Bar since 1970. Attorney. Served in U.S. Marine Corps, captain, 1966-70; Navy achievement medal. Member, St. Mary's County Property Review Board, 1971-82. Attorney, Commissioners of Leonardtown, 1971-78; attorney, St. Mary's County Board of Election Supervisors, 1972-82; attorney, St. Mary's County Board of County Commissioners, 1975-82. Member, State Prosecutor Selection and Disabilities Commission, 1977-82. Married; four children. Member of the House of Delegates since 1983. Member, Judiciary Committee; Joint Committee on Federal Relations; Special Committee on Drug and Alcohol Abuse. District office: 10 Court House Dr., Leonardtown 20650; tel. 475-8421. Annapolis office: 217 Lowe Bldg., 21401; tel. 841-3314.

