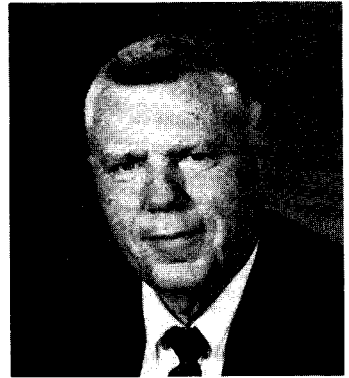


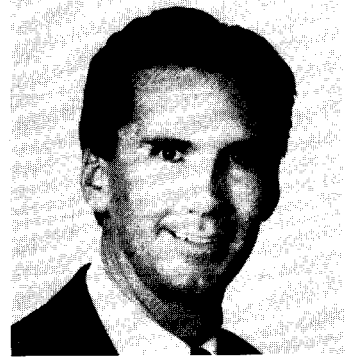
BENNETT BOZMAN, Democrat, District 38. Born in Norfolk, Virginia, May 8, 1936. Washington High School, Princess Anne; University of Maryland School of Pharmacy, B.S., 1961. U.S. Coast Guard, 1961-69. Pharmacist. Member, Democratic State Central Committee, Worcester County, 1974-78. Member, Worcester County Board of County Commissioners, 1978-90. President, Maryland Association of Counties, 1990. Member, Maryland Pharmaceutical Association; Eastern Shore Pharmaceutical Association; Worcester County Farm Bureau. Eagle Scout. Member, Salisbury Elks Club; Ocean City Veterans of Foreign Wars; Ocean City Marlin Club; Ducks Unlimited. Former member, Berlin Lions Club; Berlin-Ocean City Jaycees; Berlin Chamber of Commerce. Life member, University of Maryland Alumni Association. Recipient, Bowl of Hygeia for State of Maryland, 1989, from Berlin Fire Company for 20 years active service. Married; two children. Member of the House of Delegates since 1991. Member, Constitutional and Administrative Law Committee, 1991—. District office: 103 Cedar Ave., Berlin 21811; tel. 641-2221. Annapolis office: 413 Lowe House Office Bldg., 21401-1991; tel. 841-3431.



STEPHEN J. BRAUN, Democrat, District 28A. Born in St. Petersburg, Florida, July 14, 1951. Wake Forest University, B.A., 1973; Wake Forest University School of Law, J.D., 1975. Attorney. Member, Maryland State Bar Association; Charles County Bar Association (president); American Trial Lawyers Association. State's Attorney for Charles County. Director, Charles County Economic Development Commission. Member, Charles County Democratic Central Committee. Former Chairman, Charles County Children's Aid Society; Physicians Memorial Hospital Response Committee. Former director, Charles County Crime Solvers, Inc.; Charles County Sexual Assault Center, Inc.; Charles County Bicentennial Committee. Past president, Maryland State's Attorneys' Association. Member, Charles County Chamber of Commerce; Rotary Club of Charles County. Selected as One of Outstanding Young Men of America, 1981, 1984; as One of Five Outstanding Young Marylanders, 1982. Governor's Citation for service to Governor's Task Force on Victim Services, 1985. Married; two children. Member of the House of Delegates since 1991. Member, Constitutional and Administrative Law Committee. District office: P.O. Box 2037, Waldorf 20604; tel. 932-5812. Annapolis office: 216 Lowe House Office Bldg., 21401-1991; tel. 858-3247, 841-3247.



GERRY L. BREWSTER, Democrat, District 9. Born in Baltimore, Maryland, September 6, 1957. Princeton University, A.B., cum laude, 1979. University of Notre Dame/London (law program); University of Baltimore School of Law, J.D., 1984. Admitted to Maryland Bar, 1985. Attorney. Assistant to U.S. Senator Charles McC. Mathias, 1979-81. Law clerk for Judge William R. Buchanan, Baltimore County Circuit Court, 1984-85. Assistant State's Attorney for Baltimore County, 1985-88. Executive Assistant and Education Liaison to Baltimore County Executive; Assistant County Attorney and Legal Counsel to Baltimore County Liquor Board, 1988-90. Executive Director, Young Democrats of Md., 1987-88. Delegate, Democratic National Convention, 1988. Board of Trustees, Gilman School; St. Joseph Hospital Foundation; Maryland State Fair. Board of Directors, Towson Jaycees, 1987-88. Co-Chairman, 11th Annual Towson Town Meeting, 1987. Member, Towson Transit Center Task Force, 1987. Board of Governors, Neighborhood Association. Representative, 9th District Community Association Advisory Committee, 1989-90. Licensed steeplechase jockey and horse trainer, 1984-90. Delegate to Great Britain, American Council of Young Political Leaders, 1988. One of Ten Outstanding Young Marylanders, Md. Jaycees, 1989. Member of the House of Delegates since 1991. Member, Judiciary Committee, 1991—. District office: 527 Allegheny Ave., Towson 21204; tel. 821-1991. Annapolis office: 308 Lowe House Office Bldg., 21401-1991; tel. 841-3359.



MICHAEL ERIN BUSCH, Democrat, District 30. Born in Baltimore, Maryland, January 4, 1947. St. Mary's High School, Annapolis; Temple University, B.S., 1970. Teacher and coach, St. Mary's High School, 1973-79. Administrator for youth athletics, Anne Arundel County, 1979—. Member, State Commission on Physical Fitness. Coach of the Year (football), 1978; Man of the Year, 1982, Anne Arundel County Lacrosse Association. Unmarried. Member of the House of Delegates since 1987. Member, Economic Matters Committee, 1991—. Former member, Judiciary Committee. District office: 718 Broadmoor Ave., Annapolis 21401-1991; tel. 263-0500. Annapolis office: 212 Lowe House Office Bldg., 21401-1991; tel. 841-3211.

