

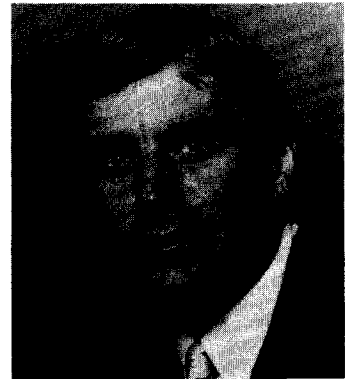
JOHN FRANK SLADE III, Democrat, District 29C. Born in Leonardtown, Maryland, August 5, 1943. Great Mills High School; St. Mary's College; University of Maryland, B.S., 1967; University of Baltimore School of Law, LL.B., 1969. Attorney. Assistant Public Defender, 1972-74; Assistant State's Attorney, St. Mary's County, 1975-76. District Public Defender, District 4 (Calvert, Charles and St. Mary's counties), 1976-82. Member, St. Mary's County Youth Commission; St. Mary's County Community College Advisory Board; St. Mary's County Ethics Law Review Committee; Legislative Council's Special Committee on Rape and Related Offenses; Region II Planning Board of Governor's Commission on Law Enforcement and the Administration of Justice. Member, Governor's Committee to Review State Policy for Funding Maryland's Chesapeake Fisheries; Aquaculture Advisory Committee. Married; three children. Member of the House of Delegates since 1983. Member, Environmental Matters Committee, 1983-90. Member, Appropriations Committee, 1991—. Chairman, Southern Maryland Delegation, 1986-90. District office: Box 20, Valley Lee 20692; tel. 994-2930. Annapolis office: 217 Lowe House Office Bldg., 21401-1991; tel. 841-3314.



ELIZABETH S. SMITH, Republican, District 33. Born in Baltimore, Maryland, March 18, 1934. Educated in Ohio and Wisconsin parochial schools; California public schools. Member, Chesapeake Bay Commission, 1978-83 (vice-chairman, 1983). Administrative assistant to Senate Minority Leader, 1971-74. Delegate to Republican National Convention, 1980, 1984, 1988 (alternate, 1972, 1976). Member, Republican Women of Anne Arundel County; 5th District Republican Club; Severna Park and Crofton Republican Women's Clubs. Former member, board of directors, Maryland State Chamber of Commerce. Past president, Greater Annapolis Chamber of Commerce; Maryland Clam Festival. Member, Ladies Auxiliary of Anne Arundel General Hospital. Recipient of honorary life membership award for outstanding service from Annapolis Chamber of Commerce, 1968. Legislator of the Year, 1982, Anne Arundel Psychological Association. Legislator of the Year, 1988, Marine Trades Association of Maryland. Married. Member of the House of Delegates since 1975. Member, Ways and Means Committee; Joint Committee on Administrative, Executive and Legislative Review. Secretary, Maryland Women Legislators. Member, Southern Legislative Conference (committee on federal preemption and state/federal affairs). District office: 3438 Merrimac Rd., Harbor Hills, Davidsonville 21035; tel. 269-0724. Annapolis office: 215 Lowe House Office Bldg., 21401-1991; tel. 841-3223.



MICHAEL J. SPRAGUE, Democrat, District 28A. Born in Indian Head, Maryland, October 11, 1940. Attended Indian Head public schools; Charles County Community College; Appalachian State Teachers College, B.S., 1965. Insurance agent. Served with U.S. Army, 1959-61. Member, Charles County Board of County Commissioners, 1970-74. Member, Indian Head-Bryans Road Business Association; Jaycees; Lions Club; Moose; Elks; Knights of Columbus. Member of the House of Delegates since 1975. Member, Ways and Means Committee; Joint Committee on Chesapeake Bay Critical Areas. Former chairperson, Southern Maryland Delegation. Served as member of Governor's Task Force on Tourism. District office: P.O. Box 37, Bryans Road 20616; tel. 375-7995. Annapolis office: 216 Lowe House Office Bldg., 21401-1991; tel. 841-3247.



J. LOWELL STOLTZFUS, Republican, District 38. Born in Pottstown, Pennsylvania, July 15, 1949. Salisbury State College, B.A., 1973; Eastern Mennonite Seminary. Plant nursery proprietor, farmer, and parochial school principal. Chairman, Somerset County Planning and Zoning Commission, 1984-85 (member, 1980-84). Chairman, Somerset County Board of Zoning Appeals, 1985-90. Past member, Area Agency on Aging. Member, Delmarva Advisory Council; Somerset County Farm Bureau. Member, National Kraut Packers Association; Association of Christian Schools International; Rehobeth Ruritan Club. Member, Holly Grove Mennonite Church. Married; four children. Member of the House of Delegates since 1991. Member, Economic Matters Committee; Joint Committee on Chesapeake Bay Critical Areas. District office: 27 West Broad St., Princess Anne 21853; tel. 651-3886. Annapolis office: 412 Lowe House Office Bldg., 21401-1991; tel. 841-3433.

