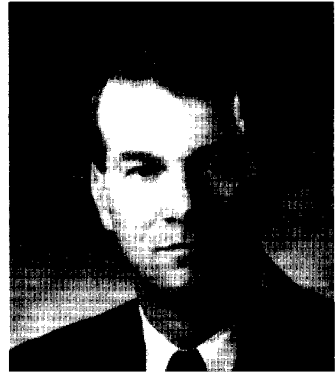


JAMES W. HUBBARD, Democrat, District 23, Prince George's County. Member, House of Delegates since 1992. Member, Environmental Matters Committee, 1992—. *Born in Washington, DC, March 20, 1948. University of Maryland, B.A., 1986. Chief administrative officer & operations director, Energy Systems Engineering, Inc. Member, Child Support Enforcement Advisory Council, 1983-85; Maryland Commission for Women, 1983-87. Chair, Prince George's Co. Commission for Women. Member, Prince George's Co. Domestic Violence Task Force; Prince George's Co. Domestic Violence Coordinating Council; Prince George's Co. Council Task Force on Employment & Vocational Opportunities for Disabled Youth & Adults; Prince George's Co. Economic Development Advisory Committee. Bd. of Governors, WUSA—Channel 9 (Gannett Corp.). Bd. of Directors, Prince George's Private Industry Council; Prince Georgians on Camera, Inc. (public access cable corp.). Member, Council on Urban Economic Development; Joint Civilian Orientation Conference-52, U.S. Dept. of Defense; University of Md. Alumni Assoc.; Alumni & Program Committee, Leadership Washington Class of 1986-87. Life Director & Co-Founder, Family Crisis Center, Inc., of Prince George's Co. Member, Eleanor & Franklin Roosevelt Democratic Club; 14th Dist. Democratic Club. Washingtonian of the Year, Washingtonian Magazine, 1984. District Office: 13305 Gallery Court, Bowie 20720-3866, tel. (301) 464-6326. Annapolis office: 208 Lowe House Office Bldg., 21401-1991; tel. (301) 858-3103.*



W. RAY HUFF, Democrat, District 31, Anne Arundel County. Member, House of Delegates since 1987. Deputy Majority Whip, 1994—. Ways and Means Committee, 1992— (transp. & lottery subcomm.); Joint Committee on Chesapeake Bay Critical Areas, 1993—. Member, Constitutional and Administrative Law Committee, 1987-90; Environmental Matters Committee, 1991-92. Representative appointed by Speaker to Southern Legislative Conference. *Born in Washington, DC, January 21, 1935. Anne Arundel Community College. Served in U.S. Navy, 1952-56. Chair, Commission to Save the Lighthouses, 1989—. Member, Maryland Greenways Commission, 1993—. Member, past treas., Anne Arundel Co. Housing Authority. Past legislative liaison for Anne Arundel Co. Past member, Anne Arundel Co. Civil Defense Committee; Anne Arundel Co. Stormwater Management Committee. Co-Chair, Small Business Forum, 1992—. Past pres., Point Pleasant Elementary PTA; Ft. Smallwood Elementary PTA; Anne Arundel Co. Life Underwriters. Legislative rep., Anne Arundel Co. Independent Insurance Agents Assoc.; member, Financial Planners Assoc. Past public education chair, American Cancer Society. Coordinator, Anne Arundel Co. Explorer Scouts of America. Chair, Glen Burnie Unit, YMCA Fund Raiser. Member, VFW; American Legion; Elks; Moose; Masons. Heritage awards & life membership, Glen Burnie Optimists. Preservation awards, Md. Historical Trust & Anne Arundel Co. Married, four children; four grandchildren. District office: 8349 Ritchie Highway, Pasadena 21122; tel. (410) 647-1111. Annapolis office: 213 Lowe House Office Bldg., 21401-1991; tel. (410) 841-3217.*



BRENDA B. HUGHES, Democrat, District 25, Prince George's County. Member of House of Delegates since 1993. Member, Ways and Means Committee, 1993— (housing & social issues subcommittee; financing resources subcommittee). Member, Law Enforcement and State Appointed Boards Committee, Prince George's County Delegation. *Born in High Point, North Carolina. North Carolina Central State University, B.S. (accounting); Central Michigan University, graduate studies. Member, Governor's Commission on Disruptive Youth, 1993—. Member, Board of Education, Prince George's County, 1988-93. Board of Directors, County Executive's Education Advisory Council, Prince George's County. Member, Maryland Federal Relations Network. Past president, Council of PTAs, Prince George's County. Past chairperson, Prince George's County Alliance of Black Elected Officials. Founder and past president, Prince George's County Alumni Chapter, Delta Sigma Theta Sorority. Member, Brown Memorial A.M.E. Church. Married. District office: 706 Iona Terrace, Capitol Heights 20743; tel. (301) 350-1532. Annapolis office: 203 Lowe House Office Bldg., 21401-1991; tel. (301) 858-3076, (410) 841-3076.*



JOHN ADAMS HURSON, Democrat, District 18, Montgomery County. Member of House of Delegates since 1991. Chair, Joint Committee on Administrative, Executive and Legislative Review, 1994—. Member, Economic Matters Committee, 1991— (unemployment insurance subcommittee); Joint Committee on Health Care Delivery and Financing, 1993—. Chair, Planning Committee, Montgomery County Delegation. *Born in Takoma Park, Maryland, December 23, 1953. Georgetown University, B.A., 1976; Georgetown University Law Center, J.D., 1979. Attorney; businessman. Member, Maryland State Bar Association. Member, Montgomery County Juvenile Court Committee, 1978-80; Montgomery County Councilmanic Charter Redistricting Commission, 1982. Executive Committee, Democratic National Committee Small Business Council, 1986. Chairman, District 18 Democratic Caucus, 1981, 1988. Co-Chairman, Greater Bethesda-Chevy Chase Coalition, 1989. Executive Committee, Atlantic Association of Young Political Leaders, 1989 (president, 1991-93). Adjunct Professor of Law, Georgetown University Law Center, 1991—. Married; two children. District office: 14 Kentbury Way, Bethesda 20814; tel. (301) 654-3513. Annapolis office: 224 Lowe House Office Bldg., 21401-1991; tel. (301) 858-3046, (410) 841-3046.*

