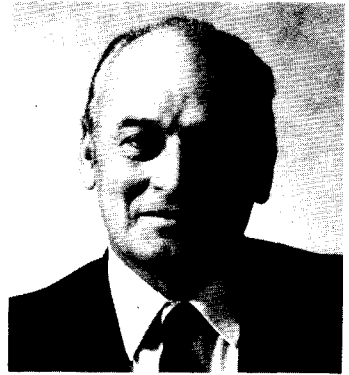


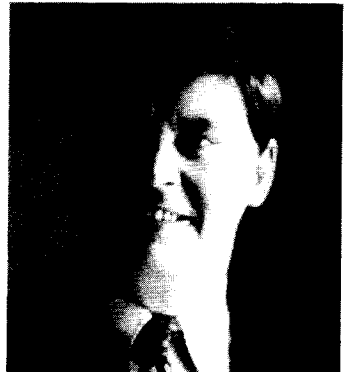
SAMUEL C. LINTON, Democrat, District 28A. Born in Riverside, Md., August 21, 1923. Attended Nanjemoy High School; Charles County Community College; Armed Forces Institute, 1944-1945. Served in Army Air Force, staff sergeant, 1943-1946; served in England, Belgium, Iceland, and Germany. Owner and operator of Linton Lumber Co. and Holly Springs Farm, Inc. Member, Maryland Constitutional Convention, 1967-1968; Interstate Commission on the Potomac River Basin, 1968-1980; Charles County Economic Development Commission, 3 years; Charles County Sanitary Commission, 1 year. First chairman, Maryland Agricultural Land Preservation Foundation, 1977-1982. First president, Nanjemoy Volunteer Fire Dept.; master of local Grange; director, Farm Bureau; director, Southern States Cooperative. Member, American Legion; V.F.W.; Charles County Historical Society. President, Society for the Restoration of Port Tobacco. Married; 5 children. Member of the House of Delegates, 1958-1966, and since 1983; member, Appropriations Committee. District office: Box 110, Holly Springs Rd., Nanjemoy 20662; tel. 246-4285. Annapolis office: 216 Lowe Bldg., 21401; tel. 841-3247.



GEORGE H. LITTRELL, JR., Democrat, District 4A. Born in Norfolk, Va., July 30, 1934. Attended Virginia Polytechnic Institute; Atlantic Christian College, B.S., 1959; East Carolina University, M.A., 1961; University of Maryland, 1961-1965. High School Principal. Specialist, Army Security Agency, 1955-1957. Married; 3 children. Member of the House of Delegates since 1983; member, Economic Matters Committee. District office: 5209 Reels' Mill Rd., Frederick 21701; tel. 662-4367. Annapolis office: 209 Lowe Bldg., 21401; tel. 841-3107.



DANIEL M. LONG, Democrat, District 38. Born in Somerset County, July 29, 1947. Attended Washington High School, Princess Anne; Salisbury State College, B.A., 1970; University of Baltimore Law School, J.D., 1974. Attorney. Former attorney to Worcester County Treasurer; Executive Board, Somerset County Tourism Commission. Attorney to Pocomoke Planning Commission and Board of Zoning Appeals. Member, American, Maryland, and Worcester County (past president) Bar Associations. Member, Somerset and Wicomico Democratic Clubs. Past president, Rehobeth Ruritan Club and Eastern Shore Chapter; University of Baltimore Alumni Association. Member, Executive Committee, Somerset County Historical Society; Somerset County Farm Bureau; Assateague Mobil Sports Fisherman's Association. Charter member, Pocomoke Jaycees. Elder, Manokin Presbyterian Church. Married; 2 children. Member of the House of Delegates since 1983; member, Ways and Means Committee. District office: Route 1, Box 82, Pocomoke 21851; tel. 957-2323 and 957-3094. Annapolis office: 412 Lowe Bldg., 21401; tel. 841-3433.



PAULA A. LONG, Democrat, District 31. Born in Elizabeth City, North Carolina, October 2, 1940. Attended Glen Burnie High School; Towson State University, B.S., 1963, M.Ed., 1972. Principal, Pasadena Elementary School. Past president, Towson State Young Democrats. Member, Stoney Creek Democratic Club; Lake Shore Democratic Club; Stoney Creek Improvement Association; American Legion Auxiliary; Council for Exceptional Children; Pasadena Elementary and George Fox Middle School PTAs; Association of Educational Leaders; Association of Administrators of Anne Arundel County; Maryland Association of Elementary School Administrators; National Association of Elementary School Administrators; Anne Arundel County Reading Council; Association for Children with Learning Disabilities. Unmarried. Member of the House of Delegates since 1983; member, Environmental Matters Committee. District office: 8230 Fort Smallwood Rd., Baltimore 21226; tel. 255-1022. Annapolis office: 213 Lowe Bldg., 21401; tel. 841-3217.

