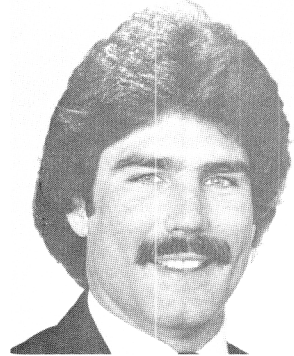
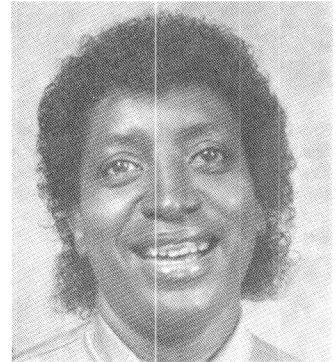


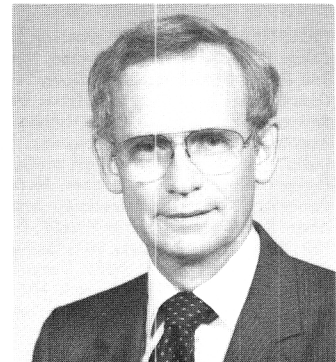
KEVIN KELLY, Democrat, District 1B. Born in Cumberland, August 18, 1953. Bishop Walsh High School; Frostburg State College, B.S., 1975; University of Baltimore School of Law, J.D., 1978. Attorney. Member, Maryland State and Allegany County Bar Associations. Former law clerk to the Honorable James S. Getty, former Chief Judge, Fourth Judicial Circuit. Administrative hearing officer, Department of Health and Mental Hygiene, 1986. President, Cumberland Central YMCA Board of Directors, 1986-87. Member, New Dominion (advisory board, 1 year). Associate member, State Trooper Lodge 40; Allegany County Lodge 48; Fort Cumberland Lodge 90. Associate member, Fraternal Order of Police. Owner, Cumberland Institute of Tae Kwon Do (Jhoon Rhee Institute affiliate); former president, Has Beens Boxing, Inc. Member of the House of Delegates since 1987. Member, Judiciary Committee. District office: 201 Washington St., Cumberland 21502-2826; tel. 777-9000, MARCOM 8-777-2378. Annapolis office: 319 Lowe Bldg., 21401; tel. 841-3454.



RUTH M. KIRK, Democrat, District 39. Born in Baltimore, February 2, 1930. Educated in Baltimore public schools. Teacher's aide. Member, Baltimore Blueprint; National Citizens Participation Council; COIL (Community Organization to Improve Life); Self Help Housing Board; Urban Service Commission; Urban Service Advisory Council; Urban Services Center 19; Poppleton PAC (Urban Renewal Planning Action Council); University of Maryland Medical Systems Advisory Board; Committee for Cultural Arts; Greater Model Community Council; Citizens Democratic Action Organization. Member, board of directors, Meals on Wheels. Member, Eastern Star; Morning Star Baptist Church. Received Baltimore Best Silver and Blue Award, 1982; Frances Morton Froelicher Civic Statesmanship Award, 1982; Golden Brick Award, Baltimore Blueprint; highest hour service in District 8 (1,929 hours). Married; 6 children. Member of the House of Delegates since 1983. Member, Constitutional and Administrative Law Committee. District office: 516 N. Charles St., Baltimore 21201; tel. 727-6212. Annapolis office: 314 Lowe Bldg., 21401; tel. 841-3263.



ROBERT H. KITTLEMAN, Republican, District 14B. Born in Omaha, Nebraska, January 31, 1926. University of Oklahoma, B.S., 1947. Engineer with Westinghouse, 1947-84, 26 years in engineering management. Presently beef cattle farmer. Served in U.S. Navy, 1943-46. Past chairman, Howard County Republican Central Committee; past president, Howard County Republican Club; past president, Howard County Citizens Association; past president, Howard County Chapter NAACP. Member of the House of Delegates since 1983. Minority Whip, 1987-. Member, Economic Matters Committee; Rules and Executive Nominations Committee. District office: 12400 Rte. 108, Clarksville 21029; tel. 854-6020 or 988-9818. Annapolis office: 312 Lowe Bldg., 21401; tel. 841-3401.



MARTHA S. KLIMA, Republican, District 9. Born in Baltimore, December 3, 1938. Notre Dame Preparatory School; Villa Julie College, A.A. Homemaker. Member, State Planning Commission. Member, Maryland Special Olympics Advisory Board; secretary, Central Maryland Health Systems Agency; member, Executive Committee and Governing Body, Central Maryland Health Systems Agency, 1980-83. President, School Board Nominating Convention of Baltimore County, two terms. Delegate, Republican National Convention, 1984. Chairperson, Membership Relations Committee, Baltimore County Chamber of Commerce; member, Diplomats Club, Baltimore County Chamber of Commerce. Member, Board of Exchange Club Center for Prevention of Child Abuse; board of directors, Greater Baltimore Medical Center; board of trustees, The Jenkins Memorial, Broadcast Institute of Maryland. Award of merit for outstanding services to community, Baltimore County Chamber of Commerce; honorary life membership, Maryland Congress of PTAs. Married; 3 children. Member of the House of Delegates since 1983. Member, Appropriations Committee. Member, American Legislative Exchange Council. District office: 1403 Newport Pl., Lutherville 21093; tel. 337-2799. Annapolis office: 308-C Lowe Bldg., 21401; tel. 841-3359.

