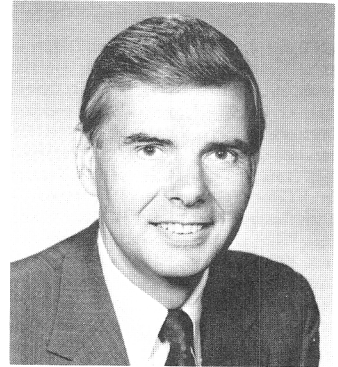
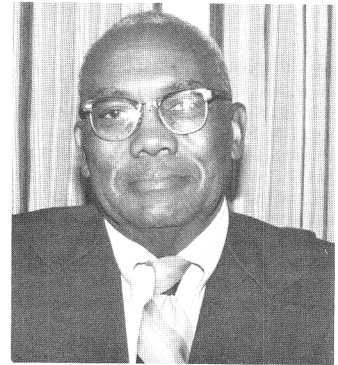


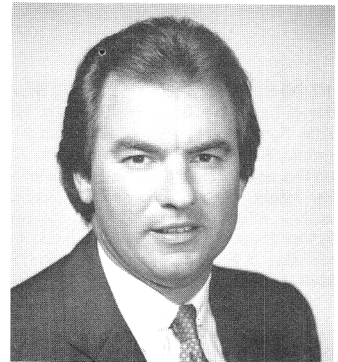
F. VERNON BOOZER, Republican, District 9. Born in Norfolk, Virginia, January 30, 1936. South Norfolk High School; Duke University, A.B., 1958; University of Maryland School of Law, J.D., 1964. Admitted to Maryland Bar, 1964. Attorney. Trial Magistrate, Baltimore County, 1967-68. Administrator of Loan Laws, State of Maryland, 1968-69. Married; 4 children. Member of House of Delegates, 1971-79. Member of the Senate since 1981. Member, Judicial Proceedings Committee; Executive Nominations Committee; Joint Budget and Audit Committee. District office: 614 Bosley Ave., Towson 21204; tel. 828-0669. Annapolis office: 403 James Bldg., 21401; tel. 841-3706.



TROY BRAILEY, Democrat, District 40. Born in Lynchburg, South Carolina. Attended Lynchburg public schools; New York University. Labor and civic leader. National vice-president, Afro-American Labor Council; state chairman and organizer for the 1963 historic march on Washington, D.C. Member, State Commission on Hereditary Disorders; Council on Toxic Substances; Child Support Enforcement Advisory Council. Member, Boy Scouts of America. Member, executive board, NAACP. Member, Prince Hall Masons. Board of Directors, YMCA; OIC; Baltimore Street Car Museum. Former member, Mayor's Task Force on Employment; Apprenticeship Advisory Council; Baltimore Community Relations Commission; Apprenticeship Advisory Board; Baltimore Advisory Council on Vocational Education; Governor's Commission on Youthful Offenders. Recipient of numerous awards and citations. Married; 2 children and 1 grandson. Member of the House of Delegates, 1967-82. Member of the Senate since 1983. Member, Economic and Environmental Affairs Committee; Executive Nominations Committee; Joint Committee on Protocol. District office: 2339 W. North Ave., Baltimore 21216; tel. 523-5205 or 669-7142. Annapolis office: 202 James Bldg., 21401; tel. 841-3656.



THOMAS L. BROMWELL, Democrat, District 8. Born in Baltimore, March 9, 1949. Baltimore Polytechnic Institute; Essex Community College, A.A., 1972. Tavern-restaurant owner. Served in Maryland Air Guard and U.S. Air Force. Member, Overlea-Fullerton Recreation Council; A.O. Civic Club; Handicapped Boy Scouts Troop 730; Nottingham Woods Community Association; Allied Community Services; Parkville American Legion; Catholic War Veterans; Save-A-Heart; Poly and Essex Alumni Associations; Perry Hall PTA; Maryland Football Foundation; usher, St. Joseph's Catholic Church, Fullerton. Member of numerous Democratic Clubs in 8th District. Elected Legislator of the Year by Maryland Association of Counties, 1984. Married; 2 sons. Member of the House of Delegates, 1979-83. Member of the Senate since 1983. Majority Whip, 1987-. Member, Finance Committee; Executive Nominations Committee; Joint Committee on Management of Public Funds. Chairman, Governor's Commission on Sports and the Economy. Chairman, Select Committee no. 4, Baltimore County. District office: 7503 Belair Road, 2nd Floor, Baltimore 21236; tel. 665-5470. Annapolis office: 215 James Bldg., 21401; tel. 841-3620.



JOHN A. CADE, Republican, District 33. Born in Charleston, S.C., July 2, 1929. Attended Kentucky and Ohio parochial schools; Xavier University, B.S., 1953; Northwestern University, M.B.A., 1954; 2 years law school—Chase College and University of Maryland. Professional business and real estate consultant. Graduate of Realtor's Institute (G.R.I.). Served in U.S. Marine Corps, 1946-48, 1950-51. Member, Anne Arundel County Charter Board, 1962-63. Member, Anne Arundel County Council, 1965-70. Member, numerous commissions and committees studying state and local financing, taxation, assessments, budgets, transportation, and education. Received Distinguished Service Award, Glen Burnie Jaycees, 1963. Married. Member of the Senate since 1975. Member, Budget and Taxation Committee; Rules Committee; Legislative Policy Committee. Minority leader. Annapolis office: 407 James Bldg., 21401; tel. 841-3568.

